

s-POD

2014 Can-Am Maverick 4 Door Installation

The UTV market is red-hot. So is the owners' desire to add aftermarket accessories to them. Unfortunately, there aren't a lot of user-friendly options to wire in these accessories....*UNTIL NOW!*

s-POD, a name synonymous with 12 volt power distribution systems for Jeeps, Trucks & SUV's has released their first UTV system. It provides the wiring solution that is desperately needed for UTV's.

The s-POD system provides 6 individual switched circuits with relays, fuses, and low voltage protection, all in a stand-alone package.

The installation takes about an hour and can be done with a minimal amount of tools. Follow along as we install the unit in our 2014 Maverick 4 door.



Photo 1

Remove the driver's front seat and side "tunnel" panel (photo 1).

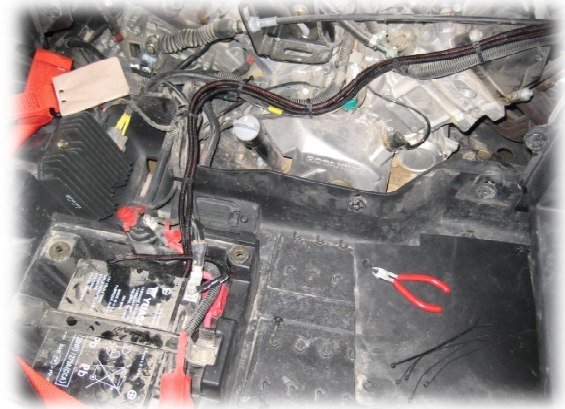


Photo 2

Remove the passenger rear seat & side "tunnel" panel to expose battery (photo 2).



Photo 3

Release the upper center dash panel (photo 3).



Photo 4

Use the template to mark & drill the 4 switch panel mounting holes to 3/16". Then, use a hole saw to drill a 1" hole in the center back side to feed the switch cable through (photo 4).

Feed the switch panel plug through the 1" hole and attach the panel w/ the supplied nuts (photos 5 & 5a).



Photo 6



Photo 5



Photo 6a

Connect the jumper harness to the switch panel. Run the harness into the forward driver side compartment following the factory wiring. Avoid heat sources. Re-attach dash center panel (photos 6 & 6a).



Photo 5a

Now it's time to create an access under the driver's seat for mounting the s-POD Source Box. There is some metal support framework under the seat that you'll need to trace around to locate your cutout.



Photo 7



Photo 7c

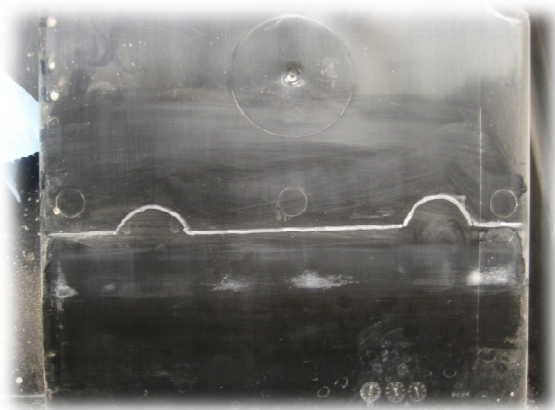


Photo 7a



Photo 7d

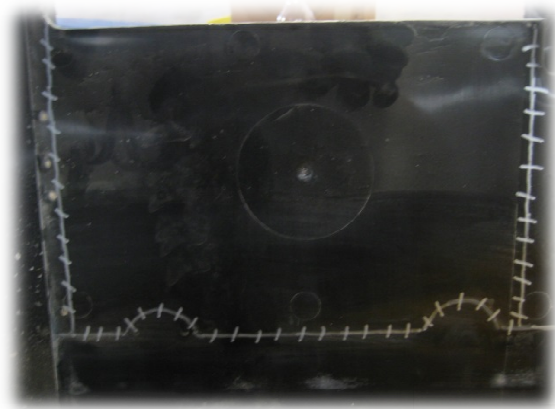


Photo 7b

Reach under seat and mark along the rearward metal edge (photo 7 & 7a). Remove the plastic cover (photo 7d), and mark for 2 additional cuts to allow for complete removal of the section (photo 7b). Cut & remove section (photo 7c).



Photo 8



Photo 9



Photo 8a

Hold the source box even with the bottom edge of the plastic rear driver side foot well. Use the source box mounting bracket as a template to mark the vertical slots (photos 8 & 8a).



Photo 9a

Use the mounting nut plates to mark the mounting holes within the slots previously marked (photo 9). Drill the 4 holes to 1/4" and mount the source box using the nut plates & screws (photo 9a).



Photo 10



Photo 10a

Route the wires from the switch panel to the source box and connect. Tie off any excess wire. Route the battery cables through the tunnel to the battery (photos 10 & 10a).



Photo 11



Photo 11a

Attach the battery cables and tie off to factory wiring harness. Be careful to avoid any heat or friction sources (photos 11 & 11a).



Photo 12

Start engine to cycle the system low voltage protection circuit and test switches (photo 12).

Attach accessories as needed.

Re-assemble parts previously removed and enjoy your s-POD equipped UTV!

Additional Information:

www.4x4s-pod.com